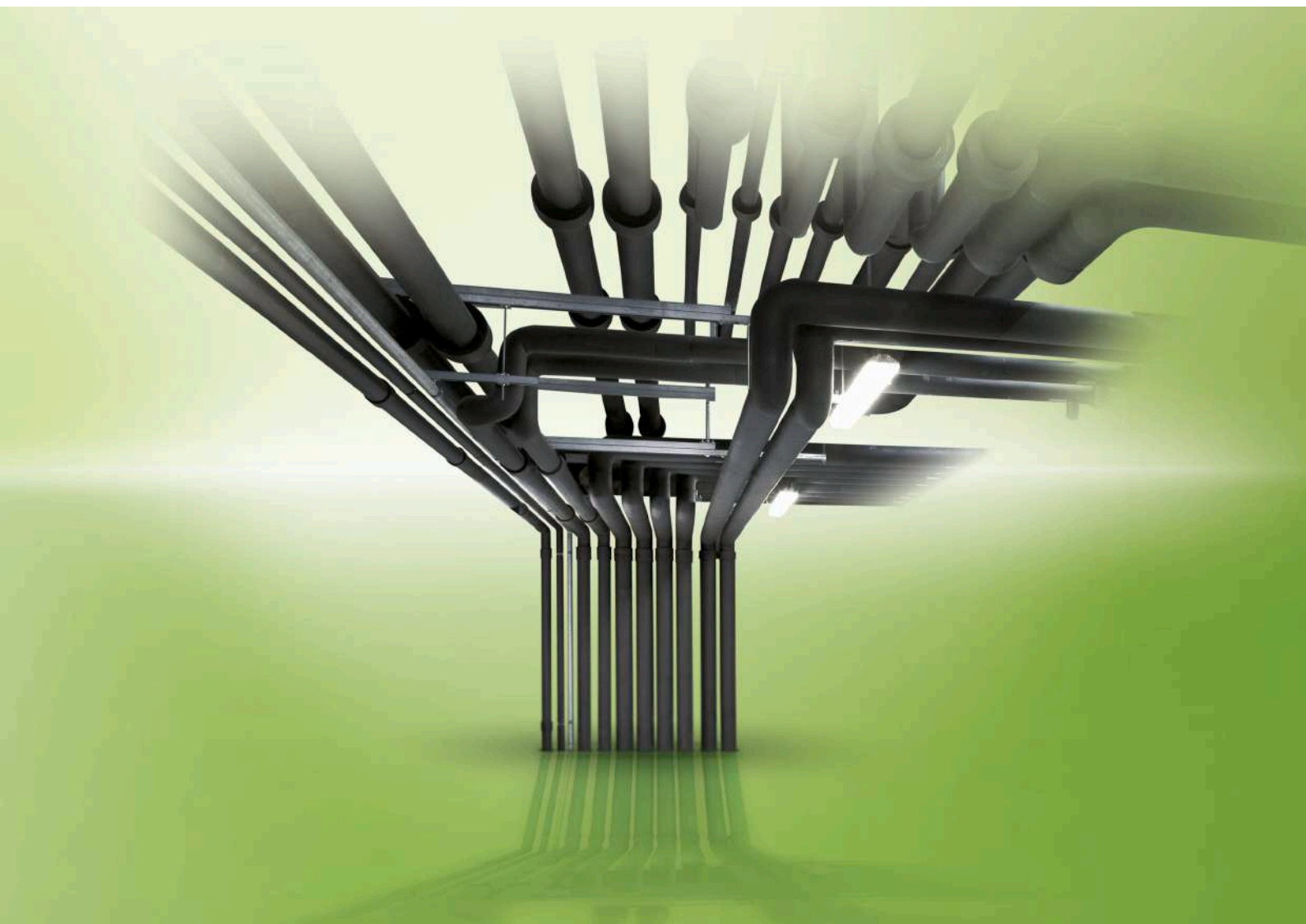




ARMAFLEX XG

THE VERSATILE SOLUTION FOR
PROFESSIONALS



- Full range for easy application on all pipe and duct sizes
- Effective reduction of thermal losses
- System security with Armafix and Armaflex Adhesives
- Available as lap-seal and top-seal solutions

Technical Data - Armaflex XG

Brief description	Highly-flexible, closed-cell insulation material with high water vapour diffusion resistance and low thermal conductivity.
Material type	Elastomeric foam based on synthetic rubber. Factory made flexible elastomeric foam (FEF) according to EN 14304.
Colour	black
Material Special Information	Self-adhesive coating: pressure-sensitive adhesive coating on modified acrylate basis with mesh structure. Covered with polyethylene foil. Traces of silicon can be found on the protection paper/foil used to protect self-adhesive closures.
Applications	Insulation / protection of pipes, air ducts, vessels (incl. elbows, fittings, flanges etc.) of air-conditioning, refrigeration and process equipment to prevent condensation and save energy as well as insulation of pipes in sanitary and heating applications.
Remarks	Declaration of Performance is available in accordance with Article 7(3) of Regulation (EU) No 305/2011 on our homepage: www.armacell.com/DoP

Property	Value/Assessment	Test ¹	Super- vision ²	Special Remark
Temperature Range				
Temperature Range	max. service temperature +110 °C min. service temperature ¹ -50 °C	(+85 °C if sheet or tape is glued to the object with its whole surface.) EU 5702	o/●	Tested acc.to EN 14706, EN 14707 and EN 14304
Thermal Conductivity				
Thermal Conductivity	ϑ_m +/-0 °C . $\lambda=$	EU 5702	o/●	Declared acc. to EN ISO 13787 Tested acc. to EN 12667 EN ISO 8497
Tubes 6-19 mm	$\lambda \leq 0,035$ W/(m · K) $[35 + 0,1 \cdot \vartheta_m + 0,0008 \cdot \vartheta_m^2]/1000$			
Sheets 6-25 mm, tape	$\lambda \leq 0,035$ W/(m · K) $[35 + 0,1 \cdot \vartheta_m + 0,0008 \cdot \vartheta_m^2]/1000$			
tubes 25-40 mm	$\lambda \leq 0,036$ W/(m · K) $[36 + 0,1 \cdot \vartheta_m + 0,0008 \cdot \vartheta_m^2]/1000$			
sheets 32-40 mm	$\lambda \leq 0,036$ W/(m · K) $[36 + 0,1 \cdot \vartheta_m + 0,0008 \cdot \vartheta_m^2]/1000$			
Water vapour diffusion resistance				
Water vapour diffusion resistance	sheets 6-25 mm; μ \geq 10.000 tubes 6-19 mm	EU 5702	o/●	Tested acc. to EN 12086 EN 13469
	sheets 32-40 mm; μ \geq 7.000 tubes 25-40 mm			
Fire performance				
Reaction to fire	tubes B _L -s3, d0 sheets B-s3,d0 tape B-s3, d0	EU 5702	o/●	Classified acc. to EN 13501-1 Tested acc. to EN 13823 EN ISO 11925-2
Practical Fire Behaviour	Self-extinguishing, does not drip, does not spread flames			
Other technical features				
Dimensions and tolerances	In accordance with EN 14304, table 1	EU 5702	o/●	Tested according to EN 822, EN 823, EN 13467
UV resistance ²	Protection against UV-radiation is necessary.	TB 142		
Storage & Shelf life	Self-adhesive tapes, self-adhesive sheets, self-adhesive tubes: 1 year			Can be stored in dry, clean rooms at normal relative humidity (50% to 70%) and ambient temperature (0 °C – 35 °C).

1. For temperatures below -50 °C please contact our Customer Service Center to request for the corresponding technical information.

2. If Armaflex is applied under UV-radiation the material must be protected within 3 days with a covering.

*1 Further documents such as test certificates, approvals and the like can be requested using the registration number given.

*2 ●: Official supervision by independent institutes and /or test authorities

o: Own in-factory quality monitoring

All data and technical information are based on results achieved under typical application conditions. Recipients of this information should, in their own interest and responsibility, clarify with us in due time whether or not the data and information apply to the intended application area. Installation instructions are available in our Armaflex installation manual. Please consult our Customer Service Center before insulating stainless steels. For some refrigerants the discharge temperature may exceed +110 °C, please consult our Customer Service Center for further information.

Armaflex XG tubes



Length 2,0 m, Color black

Pipe max. Outside-Ø [mm]	6,0 mm insulation thickness		9,0 mm insulation thickness	
	Code	m/carton	Code	m/carton
6	XG-06X006	496	XG-09X006	352
8	XG-06X008	432	XG-09X008	300
10	XG-06X010 •	380	XG-09X010	266
12	XG-06X012	330	XG-09X012	234
15	XG-06X015	280	XG-09X015	200
18	XG-06X018	210	XG-09X018	166
20	-	-	XG-09X020 •	140
22	XG-06X022	170	XG-09X022	140
25	-	-	XG-09X025 •	108
28	XG-06X028	112	XG-09X028	98
30	-	-	XG-09X030 •	92
32	-	-	XG-09X032 •	80
35	XG-06X035 •	92	XG-09X035	76
40	-	-	XG-09X040 •	66
42	-	-	XG-09X042	64
48	-	-	XG-09X048	54
50	-	-	XG-09X050 •	46
54	-	-	XG-09X054	52
60	-	-	XG-09X060	48
64	-	-	XG-09X064	44
70	-	-	XG-09X070 •	32
76	-	-	XG-09X076	32
89	-	-	XG-09X089	28
102	-	-	XG-09X102 •	26
108	-	-	XG-09X108 •	26
110	-	-	XG-09X110 •	24
114	-	-	XG-09X114	24
125	-	-	XG-09X125 •	14
140	-	-	XG-09X140 •	14
160	-	-	XG-09X160 •	10

Armaflex XG tubes



Length 2,0 m, Color black

Pipe max. Outside-Ø [mm]	13,0 mm insulation thickness		19,0 mm insulation thickness	
	Code	m/carton	Code	m/carton
6	XG-13X006	200	XG-19X006	100
10	XG-13X010	172	XG-19X010	92
12	XG-13X012	162	XG-19X012	84
15	XG-13X015	122	XG-19X015	72
18	XG-13X018	104	XG-19X018	60
20	XG-13X020 ●	104	XG-19X020 ●	58
22	XG-13X022	100	XG-19X022	56
25	XG-13X025 ●	88	XG-19X025 ●	50
28	XG-13X028	82	XG-19X028	48
30	XG-13X030 ●	72	-	-
32	XG-13X032 ●	64	XG-19X032 ●	36
35	XG-13X035	60	XG-19X035	36
40	XG-13X040 ●	50	XG-19X040 ●	32
42	XG-13X042	50	XG-19X042	32
48	XG-13X048	42	XG-19X048	28
50	XG-13X050 ●	38	XG-19X050 ●	24
54	XG-13X054	38	XG-19X054	24
60	XG-13X060	32	XG-19X060	24
64	XG-13X064	30	XG-19X064	20
70	XG-13X070 ●	28	XG-19X070 ●	18
76	XG-13X076	28	XG-19X076	18
80	XG-13X080 ●	20	XG-19X080 ●	16
89	XG-13X089	20	XG-19X089	16
102	XG-13X102 ●	20	XG-19X102	16
108	XG-13X108	20	XG-19X108	16
110	-	-	XG-19X110 ●	14
114	XG-13X114	20	XG-19X114	14
125	XG-13X125	18	XG-19X125	10
133	XG-13X133	16	XG-19X133	10
140	XG-13X140 ●	12	XG-19X140	10
160	XG-13X160	12	XG-19X160	10
168	-	-	XG-19X168	8

Pipe max. Outside-Ø [mm]	25,0 mm insulation thickness		30,0 mm insulation thickness	
	Code	m/carton	Code	m/carton
10	XG-25X010	60	-	-
12	XG-25X012	54	-	-
15	XG-25X015	48	-	-
18	XG-25X018	40	-	-
20	XG-25X020	38	-	-
22	XG-25X022	40	-	-
25	XG-25X025	34	-	-
28	XG-25X028	36	-	-
30	XG-25X030 ●	30	-	-
32	XG-25X032 ●	-	-	-
35	XG-25X035	24	-	-
40	XG-25X040	12	-	-
42	XG-25X042	24	XG-30X042 ●	22
48	XG-25X048	20	XG-30X048 ●	18
54	XG-25X054	18	XG-30X054 ●	16
60	XG-25X060	18	XG-30X060 ●	12
64	XG-25X064	16	XG-30X064 ●	12
70	XG-25X070	-	-	-
76	XG-25X076	12	XG-30X076 ●	10
89	XG-25X089	12	XG-30X089 ●	10
102	XG-25X102 ●	8	-	-
108	XG-25X108	8	-	-
114	XG-25X114	10	-	-
140	XG-25X140 ●	4	-	-

Armaflex XG tubes



Length 2,0 m, Color black

Pipe max. Outside-Ø [mm]	32,0 mm insulation thickness		40,0 mm insulation thickness	
	Code	m/carton	Code	m/carton
15	XG-32X015	32	-	-
18	XG-32X018	32	-	-
20	XG-32X020	24	-	-
22	XG-32X022	24	-	-
25	XG-32X025	24	-	-
28	XG-32X028	24	XG-40X028	18
32	XG-32X032	18	-	-
35	XG-32X035	18	XG-40X035 ●	16
40	XG-32X040 ●	18	-	-
42	XG-32X042	18	XG-40X042	12
48	XG-32X048	18	XG-40X048	12
50	XG-32X050 ●	12	-	-
54	XG-32X054	12	XG-40X054	10
60	XG-32X060	10	XG-40X060	10
64	XG-32X064	10	XG-40X064 ●	10
70	XG-32X070 ●	10	-	-
76	XG-32X076	10	XG-40X076	8
80	XG-32X080 ●	10	-	-
89	XG-32X089	10	XG-40X089 ●	6
102	XG-32X102	6	XG-40X102 ●	8
108	XG-32X108	6	XG-40X108 ●	4
114	XG-32X114	8	XG-40X114	6
125	XG-32X125 ●	6	XG-40X125 ●	4
133	XG-32X133 ●	6	-	-
140	XG-32X140	6	XG-40X140 ●	4
160	XG-32X160	4	XG-40X160 ●	4
168	-	-	XG-40X168 ●	4

Length tolerance for tubes

±1,5 %

Thickness tolerance

≤ 8 mm: ±1,0 mm
 9 - 18 mm: ±1,5 mm
 19 - 31 mm: ±2,5 mm
 > 31 mm: ±3,0 mm

● Item not in stock. Delivery on request. [MTO]

Armaflex XG tubes [additional table to display with itemgroups of local regulation]



Pipe max. Outside-Ø [mm]	[ES] For Interior application [0-10 °C] [ES] Temperature of the medium 0 °C to 10 °C		[ES] For Interior application [40-60 °C] [ES] Temperature of the medium 40 °C to 60 °C	
	Code	m/carton	Code	m/carton
12	XG-25X012	54	-	-
15	XG-25X015	48	XG-32X015	32
18	XG-25X018	40	XG-32X018	32
20	-	-	XG-32X020	24
22	XG-25X022	40	XG-32X022	24
25	-	-	XG-32X025	24
28	XG-25X028	36	XG-32X028	24
32	-	-	XG-32X032	18
35	XG-25X035	24	XG-32X035	18
42	XG-30X042 ●	22	XG-30X042 ●	22
48	XG-30X048 ●	18	XG-30X048 ●	18
54	XG-30X054 ●	16	XG-30X054 ●	16
60	XG-30X060 ●	12	XG-30X060 ●	12
64	XG-30X064 ●	12	XG-30X064 ●	12
76	XG-30X076 ●	10	XG-30X076 ●	10
89	XG-30X089 ●	10	XG-30X089 ●	10
102	XG-40X102 ●	8	XG-32X102	6
114	-	-	XG-32X114	8
125	XG-40X125 ●	4	XG-32X125 ●	6
140	-	-	XG-32X140	6
160	-	-	XG-40X160 ●	4
168	-	-	XG-40X168 ●	4

Pipe max. Outside-Ø [mm]	[ES] For Interior application >60-100 °C [ES] Temperature of the medium > 60 °C to 100 °C		[PT] For Interior application [0-10 °C] [PT] Temperature of the medium 0 °C to 10 °C	
	Code	m/carton	Code	m/carton
6	-	-	XG-19X006	100
10	-	-	XG-19X010	92
12	XG-25X012	54	XG-19X012	84
15	XG-25X015	48	XG-19X015	72
18	XG-25X018	40	XG-19X018	60
20	-	-	XG-19X020 ●	58
22	XG-25X022	40	XG-19X022	56
25	-	-	XG-19X025 ●	50
28	XG-25X028	36	XG-19X028	48
32	-	-	XG-19X032 ●	36
35	XG-25X035	24	XG-19X035	36
42	XG-30X042 ●	22	XG-30X042 ●	22
48	XG-30X048 ●	18	XG-30X048 ●	18
54	XG-30X054 ●	16	XG-30X054 ●	16
60	XG-30X060 ●	12	XG-30X060 ●	12
64	XG-30X064 ●	12	XG-30X064 ●	12
76	XG-30X076 ●	10	XG-30X076 ●	10
89	XG-30X089 ●	10	XG-30X089 ●	10
102	XG-40X102 ●	8	XG-40X102 ●	8
114	XG-40X114	6	-	-
125	XG-40X125 ●	4	XG-40X125 ●	4
140	XG-40X140 ●	4	-	-
160	XG-40X160 ●	4	-	-
168	XG-40X168 ●	4	-	-

Armaflex XG tubes [additional table to display with itemgroups of local regulati



Pipe max. Outside-Ø [mm]	[PT] For Interior application [40-65 °C] [PT] Temperature of the medium 40 °C to 65 °C		[PT] For Interior application [66-100 °C] [PT] Temperature of the medium 66 °C to 100 °C	
	Code	m/carton	Code	m/carton
6	XG-19X006	100	XG-19X006	100
10	XG-19X010	92	XG-19X010	92
12	XG-19X012	84	XG-19X012	84
15	XG-19X015	72	XG-19X015	72
18	XG-19X018	60	XG-19X018	60
20	XG-19X020 ●	58	XG-19X020 ●	58
22	XG-19X022	56	XG-19X022	56
25	XG-19X025 ●	50	XG-19X025 ●	50
28	XG-19X028	48	XG-19X028	48
32	XG-19X032 ●	36	XG-19X032 ●	36
35	XG-19X035	36	XG-19X035	36
42	XG-19X042	32	XG-30X042 ●	22
48	XG-19X048	28	XG-30X048 ●	18
54	XG-19X054	24	XG-30X054 ●	16
60	XG-30X060 ●	12	XG-30X060 ●	12
64	XG-30X064 ●	12	XG-30X064 ●	12
76	XG-30X076 ●	10	XG-30X076 ●	10
89	XG-30X089 ●	10	XG-30X089 ●	10
102	XG-32X102	6	XG-40X102 ●	8
114	XG-32X114	8	-	-
125	XG-32X125 ●	6	XG-40X125 ●	4
140	XG-32X140	6	-	-
160	XG-32X160	4	-	-

Pipe max. Outside-Ø [mm]	[FR] RT 2012- Heating and Plumbing - Standard Class 2 - TS/LS [60 °C] [FR] Temp. of the medium 60 °C, ambient temperature 10 °C		[FR] RT 2012- Heating and Plumbing - Standard Class 2 [60 °C] [FR] Temp. of the medium 60 °C, ambient temperature 10 °C	
	Code	m/carton	Code	m/carton
12	XG-09X015-TS ●	200	XG-09X012	234
15	XG-09X015-TS ●	200	XG-09X015	200
18	XG-13X018-TS	104	XG-13X018	104
20	XG-13X022-TS	100	XG-13X020 ●	104
22	XG-13X022-TS	100	XG-13X022	100
25	XG-19X028-TS	48	XG-19X025 ●	50
28	XG-19X028-TS	48	XG-19X028	48
32	XG-19X035-TS	36	XG-19X032 ●	36
35	XG-19X035-TS	36	XG-19X035	36
40	XG-25X042-TS	24	XG-25X042	24
42	XG-25X042-TS	24	XG-25X042	24
48	XG-25X048-TS	20	XG-25X048	20
50	XG-32X054-TS	12	XG-32X050 ●	12
54	XG-32X054-TS	12	-	-
60	XG-32X060-TS	10	XG-32X060	10
64	XG-32X064-TS	10	XG-32X064	10
70	-	-	XG-32X070 ●	10
76	XG-32X076-TS	10	XG-32X076	10
80	-	-	XG-32X080 ●	10
89	XG-32X089-TS	10	XG-32X089	10
102	-	-	XG-40X102 ●	8
108	-	-	XG-40X108 ●	4
114	-	-	XG-40X114	6
140	-	-	XG-40X140 ●	4
160	-	-	XG-40X160 ●	4
168	-	-	XG-40X168 ●	4

Armaflex XG tubes [additional table to display with itemgroups of local regulation]



Pipe max. Outside-Ø [mm]	[FR] BBC - Heating and Plumbing - Standard Class 4 - TS/LS [60 °C] [FR] Temp. of the medium 60 °C, ambient temperature 10 °C		[FR] BBC - Heating and Plumbing - Standard Class 4 [60 °C] [FR] Temp. of the medium 60 °C, ambient temperature 10 °C	
	Code	m/carton	Code	m/carton
12	XG-13X012-TS ●	162	XG-13X012	162
15	XG-19X015-TS	72	XG-19X015	72
18	XG-25X018-TS ●	40	XG-25X018	40
20	XG-25X022-TS	40	XG-25X020	38
20	-	-	XG-25X022	40
22	XG-32X022-TS	28	XG-32X022	24
25	XG-32X028-TS	24	XG-32X028	24
28	XG-32X028-TS	24	XG-32X028	24
30	-	-	XG-40X035 ●	16
32	-	-	XG-40X035 ●	16
35	-	-	XG-40X035 ●	16

Pipe max. Outside-Ø [mm]	[FR] RT 2012- Cold - Standard Class 3 - TS/LS [7 °C] [FR] Temp. of the medium 7 °C, ambient temperature 26 °C		[FR] RT 2012- Cold - Standard Class 3 [7 °C] [FR] Temp. of the medium 7 °C, ambient temperature 26 °C	
	Code	m/carton	Code	m/carton
12	XG-19X015-LS ●	72	XG-13X012	162
15	XG-19X015-LS ●	72	XG-13X015	122
18	XG-19X018-LS	60	XG-19X018	60
20	XG-19X022-LS	56	XG-19X020 ●	58
22	XG-19X022-LS	56	XG-19X022	56
25	XG-19X028-LS	48	XG-19X025 ●	50
28	XG-25X028-LS	36	XG-25X028	36
30	XG-25X035-LS	24	XG-25X030 ●	30
32	XG-25X035-LS	24	XG-25X035	24
35	XG-32X035-LS	18	XG-32X035	18
40	XG-32X042-LS	18	XG-32X040 ●	18
42	XG-32X042-LS	18	-	-
48	XG-32X048-LS	18	-	-
50	XG-40X054-LS ●	10	XG-40X054	10
54	XG-40X054-LS ●	10	XG-40X054	10
60	-	-	XG-40X060	10
64	-	-	XG-40X064 ●	10
70	XG-40X076-LS ●	8	XG-40X076	8
76	XG-40X076-LS ●	8	XG-40X076	8

Pipe max. Outside-Ø [mm]	[FR] BBC - Cold - Standard Class 4 - TS/LS [7 °C, 26 °C] [FR] Temp. of the medium 7 °C, ambient temperature 26 °C		[FR] BBC - Cold - Standard Class 4 [7 °C, 26 °C] [FR] Temp. of the medium 7 °C, ambient temperature 26 °C	
	Code	m/carton	Code	m/carton
12	XG-19X015-LS ●	72	XG-13X012	162
15	XG-19X015-LS ●	72	XG-19X015	72
18	XG-19X018-LS	60	XG-19X018	60
20	XG-25X022-LS ●	40	XG-25X022	40
22	XG-25X022-LS ●	40	XG-25X022	40
25	XG-32X028-LS	24	XG-25X025	34
25	-	-	XG-32X028	24
28	XG-32X028-LS	24	XG-32X028	24
30	XG-32X035-LS	18	XG-32X035	18
32	-	-	XG-40X035 ●	16
35	-	-	XG-40X035 ●	16
40	XG-40X042-LS ●	12	XG-40X042	12
42	XG-40X042-LS ●	12	XG-40X042	12

Thickness tolerance

≤ 8 mm:	±1,0 mm
9 - 18 mm:	±1,5 mm
19 - 31 mm:	±2,5 mm
> 31 mm:	±3,0 mm

● Item not in stock. Delivery on request. [MTO]

Armaflex XG tubes lap-seal



Length 2,0 m, Color black, Triple adhesive tube (seams + insulating overlap), for cold applications.

Pipe max. Outside-Ø [mm]	9,0 mm insulation thickness		19,0 mm insulation thickness	
	Code	m/carton	Code	m/carton
15	-	-	XG-19X015-LS ●	72
18	XG-09X018-LS ●	140	XG-19X018-LS	60
22	XG-09X022-LS ●	136	XG-19X022-LS	56
28	XG-09X028-LS ●	98	XG-19X028-LS	48
35	XG-09X035-LS ●	72	XG-19X035-LS	36
42	XG-09X042-LS ●	60	XG-19X042-LS	32
54	XG-09X054-LS ●	46	-	-
60	-	-	XG-19X060-LS	24
70	XG-09X070-LS ●	32	-	-
114	-	-	XG-19X114-LS ●	14

Pipe max. Outside-Ø [mm]	25,0 mm insulation thickness		32,0 mm insulation thickness	
	Code	m/carton	Code	m/carton
22	XG-25X022-LS ●	40	XG-32X022-LS	24
28	XG-25X028-LS	36	XG-32X028-LS	24
35	XG-25X035-LS	24	XG-32X035-LS	18
42	XG-25X042-LS	24	XG-32X042-LS	18
48	XG-25X048-LS	20	XG-32X048-LS	18
76	XG-25X076-LS ●	12	-	-
89	XG-25X089-LS ●	12	-	-
102	-	-	XG-32X102-LS	6

Pipe max. Outside-Ø [mm]	40,0 mm insulation thickness			
	Code	m/carton		
42	XG-40X042-LS ●	12	-	-
54	XG-40X054-LS ●	10	-	-
76	XG-40X076-LS ●	8	-	-
89	XG-40X089-LS ●	6	-	-

Length tolerance for tubes

±1,5 %

Thickness tolerance

≤ 8 mm: ±1,0 mm
 9 - 18 mm: ±1,5 mm
 19 - 31 mm: ±2,5 mm
 > 31 mm: ±3,0 mm

● Item not in stock. Delivery on request. [MTO]

Armaflex XG tubes top-seal



Length 2,0 m, Color black

Pipe max. Outside-Ø [mm]	9,0 mm insulation thickness		13,0 mm insulation thickness	
	Code	m/carton	Code	m/carton
12	-	-	XG-13X012-TS ●	162
15	XG-09X015-TS ●	200	XG-13X015-TS	122
18	XG-09X018-TS	166	XG-13X018-TS	104
22	XG-09X022-TS	140	XG-13X022-TS	100
28	XG-09X028-TS	98	XG-13X028-TS	82
35	XG-09X035-TS	76	XG-13X035-TS	60
42	XG-09X042-TS	64	XG-13X042-TS	50
48	XG-09X048-TS	54	XG-13X048-TS	42
54	XG-09X054-TS	52	XG-13X054-TS	38
60	XG-09X060-TS ●	48	XG-13X060-TS	32
64	-	-	XG-13X064-TS ●	30
76	-	-	XG-13X076-TS	28
89	-	-	XG-13X089-TS	20

Armaflex XG tubes top-seal



Length 2,0 m, Color black

Pipe max. Outside-Ø [mm]	19,0 mm insulation thickness		25,0 mm insulation thickness	
	Code	m/carton	Code	m/carton
12	XG-19X012-TS	84	-	-
15	XG-19X015-TS	72	-	-
18	XG-19X018-TS	60	XG-25X018-TS ●	40
22	XG-19X022-TS	56	XG-25X022-TS	40
28	XG-19X028-TS	48	XG-25X028-TS	36
35	XG-19X035-TS	36	XG-25X035-TS	28
42	XG-19X042-TS	32	XG-25X042-TS	24
48	XG-19X048-TS	28	XG-25X048-TS	20
54	-	-	XG-25X054-TS	18
60	XG-19X060-TS	24	XG-25X060-TS	18
64	XG-19X064-TS	20	XG-25X064-TS	16
76	XG-19X076-TS	18	XG-25X076-TS	12
89	XG-19X089-TS	16	XG-25X089-TS	12

Pipe max. Outside-Ø [mm]	32,0 mm insulation thickness		40,0 mm insulation thickness	
	Code	m/carton	Code	m/carton
18	XG-32X018-TS ●	32	-	-
22	XG-32X022-TS	28	XG-40X022-TS	-
28	XG-32X028-TS	24	XG-40X028-TS	18
35	XG-32X035-TS	18	XG-40X035-TS	16
42	XG-32X042-TS	18	XG-40X042-TS	12
48	XG-32X048-TS	18	XG-40X048-TS	12
54	XG-32X054-TS	12	XG-40X054-TS	10
60	XG-32X060-TS	10	XG-40X060-TS	10
64	XG-32X064-TS	10	XG-40X064-TS	10
70	XG-32X070-TS ●	10	XG-40X070-TS	-
76	XG-32X076-TS	10	XG-40X076-TS	8
80	XG-32X080-TS ●	10	-	-
89	XG-32X089-TS	10	XG-40X089-TS	6

Length tolerance for tubes

±1,5 %

Thickness tolerance

≤ 8 mm: ±1,0 mm
 9 - 18 mm: ±1,5 mm
 19 - 31 mm: ±2,5 mm
 > 31 mm: ±3,0 mm

● Item not in stock. Delivery on request. [MTO]

Armaflex XG tubes self-adhesive



Length 2,0 m, Color black

Pipe max. Outside-Ø [mm]	9,0 mm insulation thickness		13,0 mm insulation thickness	
	Code	m/carton	Code	m/carton
12	XG-09X012-A	234	XG-13X012-A	162
15	XG-09X015-A	200	XG-13X015-A	122
18	XG-09X018-A	166	XG-13X018-A	104
22	XG-09X022-A	140	XG-13X022-A	100
28	XG-09X028-A	98	XG-13X028-A	82
35	XG-09X035-A	76	XG-13X035-A	60
42	XG-09X042-A	64	XG-13X042-A	50
48	XG-09X048-A ●	54	XG-13X048-A	42
54	XG-09X054-A ●	52	XG-13X054-A	38
60	XG-09X060-A ●	48	XG-13X060-A	32
76	-	-	XG-13X076-A	28
89	-	-	XG-13X089-A	20

Armaflex XG tubes self-adhesive



Length 2,0 m, Color black

Pipe max. Outside-Ø [mm]	19,0 mm insulation thickness		25,0 mm insulation thickness	
	Code	m/carton	Code	m/carton
15	XG-19X015-A ●	72	-	-
18	XG-19X018-A	60	XG-25X018-A ●	40
22	XG-19X022-A	56	XG-25X022-A	40
28	XG-19X028-A	48	XG-25X028-A	36
35	XG-19X035-A	36	XG-25X035-A	24
42	XG-19X042-A	32	XG-25X042-A	24
48	XG-19X048-A	28	XG-25X048-A	20
54	XG-19X054-A	24	XG-25X054-A	18
60	XG-19X060-A	24	XG-25X060-A	18
76	XG-19X076-A	18	XG-25X076-A	12
89	XG-19X089-A	16	XG-25X089-A	12

Length tolerance for tubes

±1,5 %

Thickness tolerance

≤ 8 mm: ±1,0 mm
 9 - 18 mm: ±1,5 mm
 19 - 31 mm: ±2,5 mm
 > 31 mm: ±3,0 mm

● Item not in stock. Delivery on request. [MTO]

Armaflex XG tubes endless



Color black

Pipe max. Outside-Ø [mm]	6,0 mm insulation thickness		9,0 mm insulation thickness	
	Code	m/carton	Code	m/carton
6	XG-06X006/E	95	XG-09X006/E	70
8	XG-06X008/E	85	XG-09X008/E ●	60
10	XG-06X010/E	75	XG-09X010/E	50
12	XG-06X012/E	65	XG-09X012/E	45
15	XG-06X015/E	55	XG-09X015/E	40
18	XG-06X018/E	45	XG-09X018/E	38
22	XG-06X022/E	40	XG-09X022/E	30
28	XG-06X028/E	30	XG-09X028/E	26

Pipe max. Outside-Ø [mm]	13,0 mm insulation thickness			
	Code	m/carton		
6	XG-13X006/E	45	-	-
10	XG-13X010/E	35	-	-
12	XG-13X012/E	32	-	-
15	XG-13X015/E	28	-	-
18	XG-13X018/E	27	-	-
22	XG-13X022/E	26	-	-
28	XG-13X028/E	20	-	-

Length tolerance for tubes

±1,5 %

Thickness tolerance

≤ 8 mm: ±1,0 mm
 9 - 18 mm: ±1,5 mm
 19 - 31 mm: ±2,5 mm
 > 31 mm: ±3,0 mm

● Item not in stock. Delivery on request. [MTO]

Armaflex XG sheets endless



Width 1,0 m

Code	Insulation thickness [mm]	Roll length [m]	m ² /carton
XG-06-99/E	6,0	15	15
XG-09-99/E	9,0	10	10
XG-13-99/E	13,0	8	8
XG-19-99/E	19,0	6	6
XG-25-99/E	25,0	4	4
XG-32-99/E	32,0	3	3
XG-40-99/E	40,0	7	7

Length tolerance for sheets	±1,5 %
Thickness tolerance for sheets	≤ 6 mm: ±1,0 mm
	7 - 19 mm: ±1,5 mm
	>19 mm: ±2,0 mm

Armaflex XG sheets endless self-adhesive



Width 1,0 m, Color black

Code	Insulation thickness [mm]	Roll length [m]	m ² /carton
XG-06-99/EA	6,0	15	15
XG-09-99/EA	9,0	10	10
XG-13-99/EA	13,0	8	8
XG-19-99/EA	19,0	6	6
XG-25-99/EA	25,0	4	4
XG-32-99/EA	32,0	3	3
XG-40-99/EA	40,0	7	7

Length tolerance for sheets	±1,5 %
Thickness tolerance for sheets	≤ 6 mm: ±1,0 mm
	7 - 19 mm: ±1,5 mm
	>19 mm: ±2,0 mm

Armaflex XG tapes



Color black, Armaflex XG Top seal tape

Code	Width [mm]	Length [m]	Thickness [mm]	Rolls/carton
TS-TAPE-35	35,0	25	0,11	9

Armaflex XG tapes self-adhesive



Code	Width [mm]	Length [m]	Thickness [mm]	Rolls/carton
XG-TAPE	50,0	15	3	12

Armacell GmbH

Robert Bosch Str. 10 • 48153 Muenster • Germany
 Phone +49 (0) 251 / 76 03-0 • Fax +49 (0) 251 / 76 03-448
 www.armacell.com • info@armacell.com

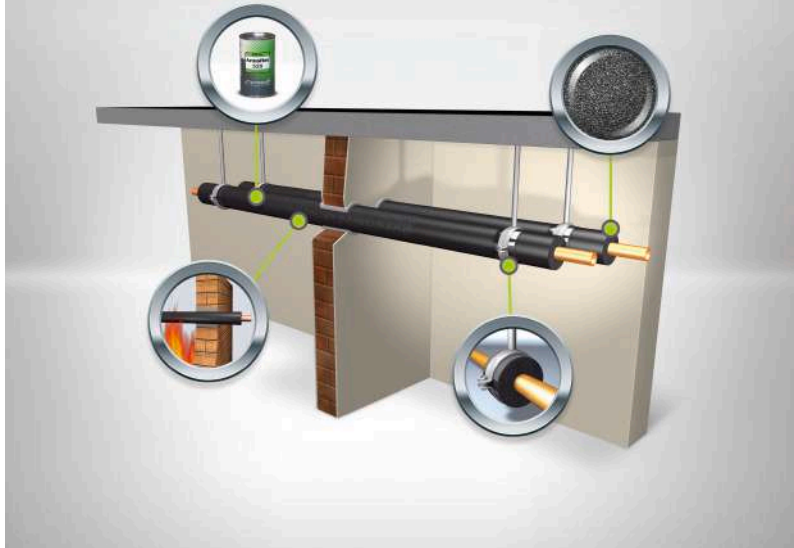
UN SYSTÈME COMPLET

Armacell offre une solution complète soigneusement coordonnée et bien pensée pour tous les défis d'isolation

professionnelle : Armaflex XG manchons standards, auto-adhésifs, Lap Seal et Top Seal, couronnes, rouleaux standards et auto-adhésifs et Tape auto-adhésifs + supports de tuyauterie Armafix X pour éviter les ponts thermiques et manchons coupe-feu Armaflex Protect.

La vaste gamme d'accessoires spécialement conçus pour

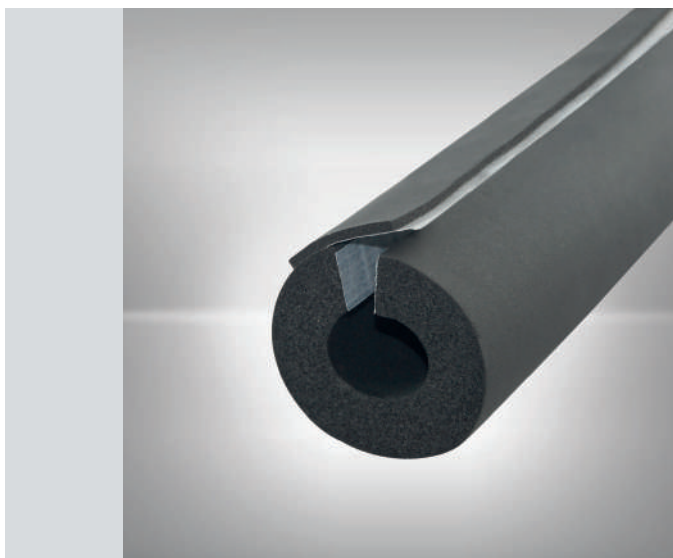
l'application des isolants Armaflex telle la nouvelle génération de colles ou la boîte à outils Armaflex rend l'installation d'autant plus simple.



ARMAFLEX XG LAP SEAL

Le manchon fendu auto-adhésif avec bande de recouvrement isolante

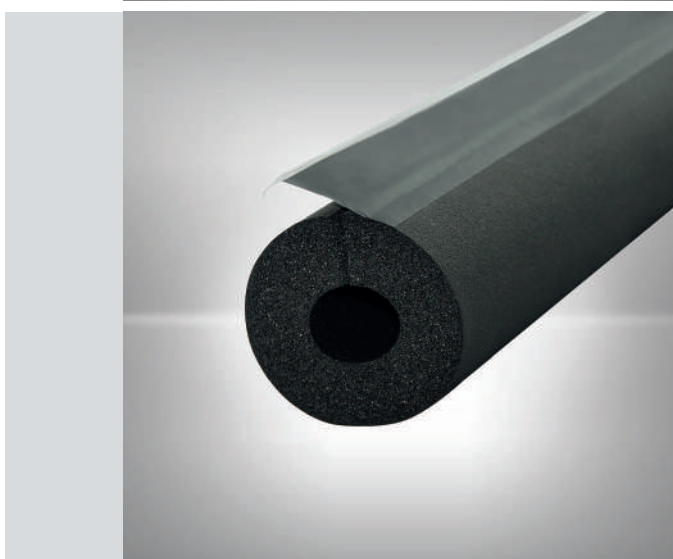
Armaflex XG Lap Seal est un isolant flexible à base d'élastomère spécialement conçu afin de répondre aux exigences du DTU 45.2 pour les réseaux froids des bâtiments tertiaires et commerciaux. Les 3 chants auto-adhésifs permettent non seulement de gagner du temps lors de l'installation mais aussi d'utiliser une moins grande quantité de colles et donc aide à réduire les émissions de solvants. La languette isolante assure une finition efficace, esthétique et de qualité.



ARMAFLEX XG TOP SEAL

Le manchon fendu avec bande de recouvrement auto-adhésive en PVC

Armaflex XG Top Seal est un isolant flexible à base d'élastomère spécialement conçu pour améliorer l'efficacité énergétique des tuyauteries de chauffage et sanitaire. La fermeture du joint à l'aide de la bande auto-adhésive en PVC permet de gagner du temps lors de la mise en oeuvre et offre un aspect final esthétique. La gamme couvre un large panel de références en ligne avec les recommandations RT2012.



ARMAFIX X

Le support de tuyauterie isolant universel pour lutter contre les ponts thermiques

Armafix X permet d'isoler thermiquement le tuyau du support de fixation dans les multiples applications courantes de CVC. Léger et flexible, il offre la solution contre les ponts thermiques au niveau des supports de fixation, point faible potentiel du système isolé. Le joint longitudinal auto-adhésif permet une installation rapide tandis que la longueur de la pièce en mousse élastomère simplifie l'assemblage et le collage avec l'isolant adjacent.



